



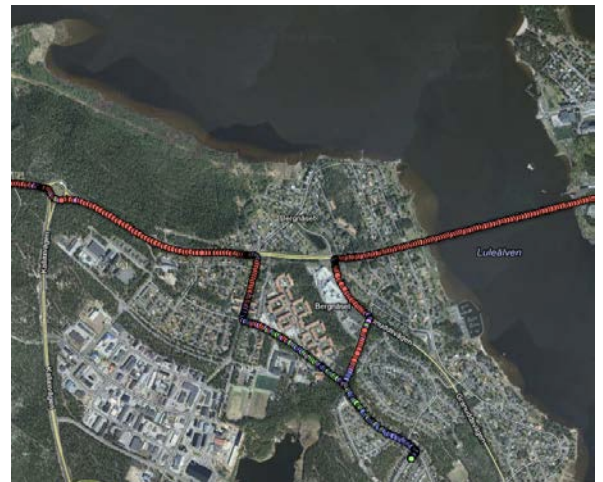
Intelligent Road

safety by arctic know-how

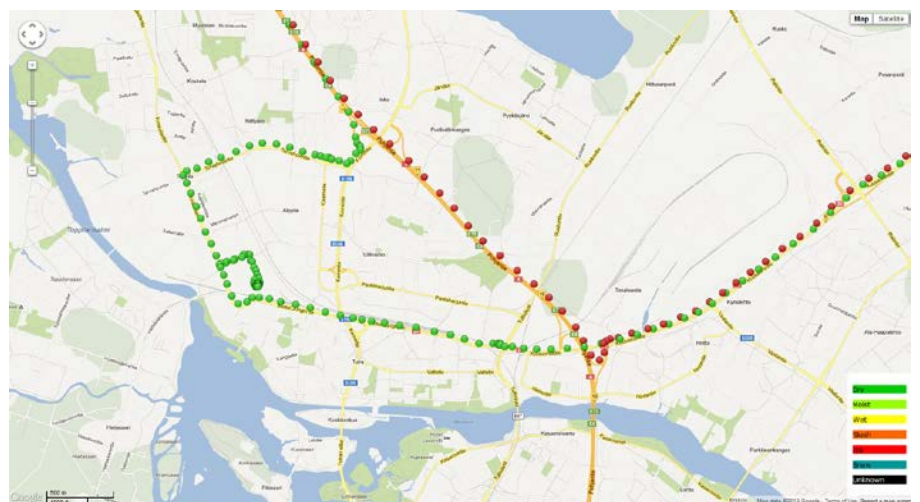


WEB APPLICATIONS USED IN VISUALISING THE ROAD-WEATHER DATA

The data collected in Luleå during the winter season 2012/2013 has been analyzed and the result is an improved friction estimation using the RoadEye sensor. The friction is divided into five different friction intervals (0-0.2, 0.2-0.4, 0.4-0.6, 0.6-0.8 and 0.8-1 μ) where friction below 0.4 μ means that there is a risk for slippery road conditions depending on what kind of tires are mounted on the vehicle.



A common web application for collecting all the Intelligent Road system data is being prepared. The image on the right is showing the data collected by using an optical road-weather monitoring sensor, mounted in Kuljetus Kovalainen Ltd truck. The image shows how the weather conditions have changed quickly within one day from dry to snowy road surface, green markings indicating dry surface and the red ones indicating snowy surface. Validation and further improvements visualization of data are currently in progress.



Safety for arctic roads! Intelligent Road system - preventing accidents on the arctic roads.

Safety by technology! Real-time conditions information collected from vehicle-sensors, road-side technology, road-weather stations and weather forecasts.

Arctic know-how! Collaboration of expert organizations from the arctic area.

Visit us at www.intelligentroad.eu and learn more.



IN COLLABORATION WITH:

Sten Löfving Optical Sensors, Eistec, Rajd SysTech, Luleå Municipality, TraFi, Vaisala, Sunit, Kuljetus Kovalainen



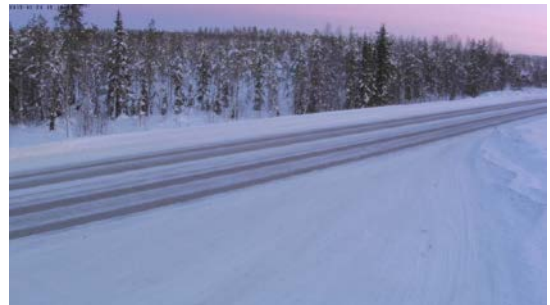
Intelligent Road

safety by arctic know-how



WEBSITE PUBLISHED FOR FMI'S INTELLIGENT ROAD WEATHER STATION

The Finnish Meteorological Institute (FMI) is carrying out measurements in the Sodankylä test-site by using the experimental intelligent road-weather station. FMI has published a web-page to present the data and camera images from the road. The web-site can be found at <http://sodrws.fmi.fi/>



Road camera picture from the research station

THE BIG PICTURE OF THE INTELLIGENT ROAD SYSTEM

Go to the Intelligent Road website and see how the big picture looks like.

[Link to the website](#)



Safety for arctic roads! Intelligent Road system - preventing accidents on the arctic roads.

Safety by technology! Real-time conditions information collected from vehicle-sensors, road-side technology, road-weather stations and weather forecasts.

Arctic know-how! Collaboration of expert organizations from the arctic area.

Visit us at www.intelligentroad.eu and learn more.



IN COLLABORATION WITH:

Sten Löfving Optical Sensors, Eistec, Rajd SysTech, Luleå Municipality, TraFi, Vaisala, Sunit, Kuljetus Kovalainen