



Intelligent Road

safety by arctic know-how



INTELLIGENT ROAD KICKED OFF IN AUGUST 2012

The kick-off was arranged on 30th of August in Luleå and was hosted by Luleå Technical University. The meeting allowed the partners to network and present plans that will be put into action on each test site with the test partners.

NEWLY LAUNCHED WEBSITE

What is Intelligent Road about? Who is making the research, where and why? The first version of Intelligent Road website has been launched at 31st of January 2013 and it can be found at www.intelligentroad.eu

Note that this is the first version and it will be shortly updated

INTELLIGENT ROAD WEATHER STATION IN SODANKYLÄ

Vaisala's Intelligent Road Weather Station has been put into action by Arctic Research Centre of Finnish Meteorological Institute located in Sodankylä. This well-equipped RWS is measuring for example road surface temperature, air temperature and humidity, wind speed and direction, rain, road friction, surface condition, salt level and visibility. Also applied in the system is a 3G system with communication capabilities between the RWS and a vehicle.



Safety for arctic roads! Intelligent Road system - preventing accidents on the arctic roads.

Safety by technology! Real-time conditions information collected from vehicle-sensors, road-side technology, road-weather stations and weather forecasts.

Arctic know-how! Collaboration of expert organizations from the arctic area.

Visit us at www.intelligentroad.eu and learn more.



IN COLLABORATION WITH:

Sten Löfving Optical Sensors, Eistec, Rajd SysTech, Luleå Municipality, TraFi, Vaisala, Sunit, Kuljetus Kovalainen



Intelligent Road

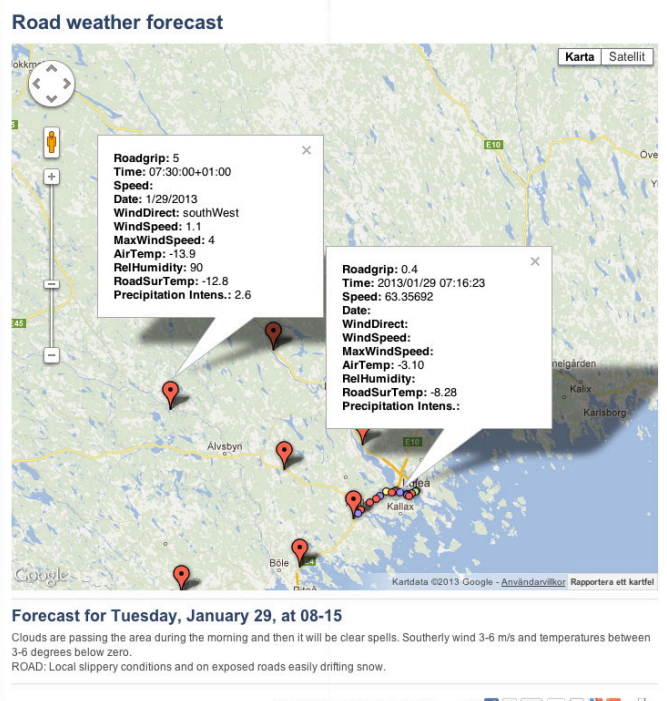
safety by arctic know-how



FIRST LOCAL-LEVEL DEMO SYSTEM IMPLEMENTED IN LULEÅ

At LTU a first prototype of a web page for road weather information has been launched. The web page presents daily road condition estimations and local road weather forecasts along a designated route.

The larger red marking are stationary road weather stations presenting humidity, road temperature, air temperature, wind speed and direction and also precipitation. The smaller dots in different colors present the estimated road-grip. If the dot is clicked on, information about the vehicle speed and the surface temperature along the route is also presented. The short term weather forecast is presented at the bottom of the page and is valid for 5-7 hours.



Safety for arctic roads! Intelligent Road system - preventing accidents on the arctic roads.
 Safety by technology! Real-time conditions information collected from vehicle-sensors, road-side technology, road-weather stations and weather forecasts.
 Arctic know-how! Collaboration of expert organizations from the arctic area.

Visit us at www.intelligentroad.eu and learn more.



IN COLLABORATION WITH:
 Sten Löfving Optical Sensors, Eistec, Rajd SysTech, Luleå Municipality, TraFi, Vaisala, Sunit, Kuljetus Kovalainen